



VILHELMINA MODEL FOREST

2004 - 2024

Oborniki, Poland
March 2024

Leif Jougda
Mikael Strömberg
Camilla Thellbro



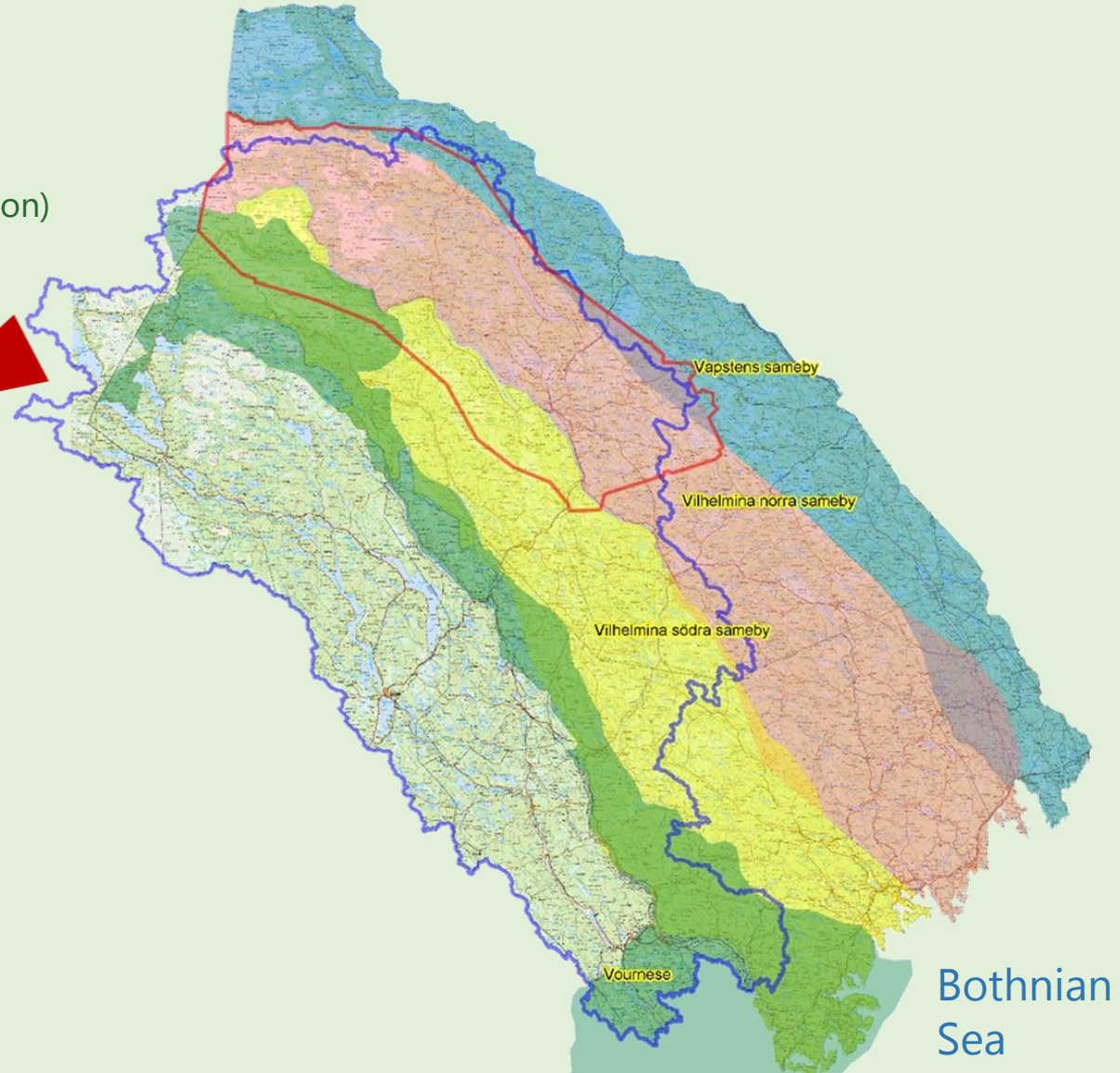
Landscape

Vilhelmina municipality

- 6 300 inhabitants, 0,7 person/km²
- 8 700 km² (3 200 km² productive forest; 60 % private, 40 % state/common)
- 16 % protected of total area (20 % of the productive forest)

2 (4) Sami reindeer-herding and economic districts

Ångermanälven catchment area



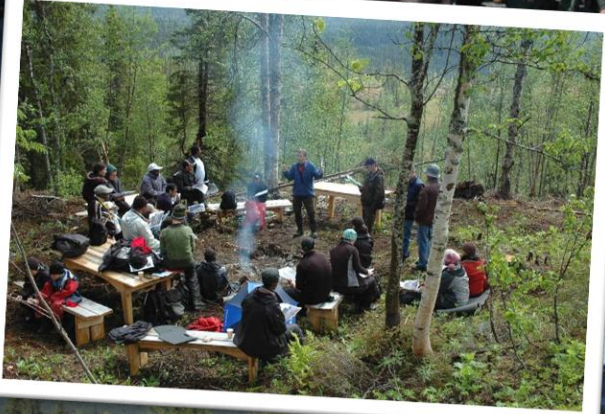
Bothnian
Sea



International Model Forest Network



Partnership & Sustainability 2004-2014

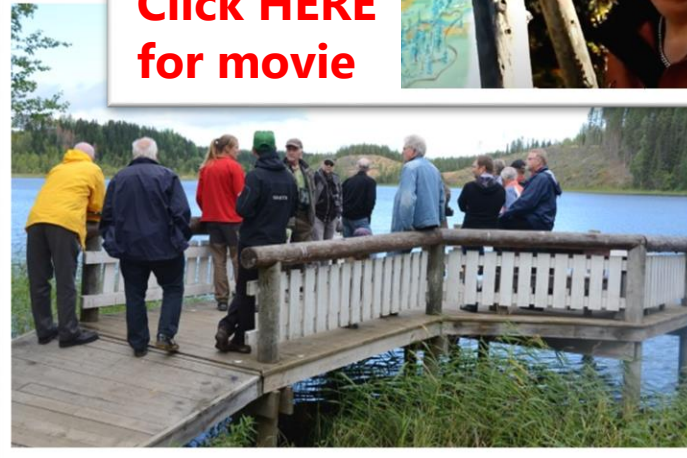


Leif Jougda
General Manager VMF, specialist Skogsstyrelsen

Njakatfäll



[Click HERE for movie](#)



Results & Challenges for the future

Nature Conservation

- Preserve and manage

Non-Forestry Resources

- Sámi Reindeer Husbandry
- Cultural values

Water Management

- Hydropower <> ecosystems

Forest Production

- Alternative methods

Participatory Planning

- Cooperation for sustainable land use

Climate Change

- Societal adaptation and resilience

Nature Conservation

NW Sweden has the largest continuous areas of nature-like forests in Europe - not clear cut, but managed by means of various selective cutting methods.

Large formally protected areas, but even larger areas with documented high values that are not protected.

Land owners experience overhead limitations affecting their ownership rights.

16 % of Vilhelmina municipality (20 % of productive forest) protected and more protected areas are to be established.

- **New national park** in VMF based on local consensus; not formed due to political rejections
- Ongoing negotiations between the state and the local forest common regarding geographic extent of protection and of extent of regulations for land use

How to preserve both high natural values, traditions and livelihoods in the forest landscape?



Forest Production

- **Early testing of alternatives to clear cuts**, sanctioned by non-industrial private forest owners and private forest companies.
- **Demonstration areas** presenting various forest management methods in practice as well as pristine areas.

Selective cutting



Need to follow up on:

- *Are there alternatives to clear cutting?*
- *Which forest management methods are suitable where?*



Forest land cover



Harvested 1958-2004

Water Management

Ångermanälven facts

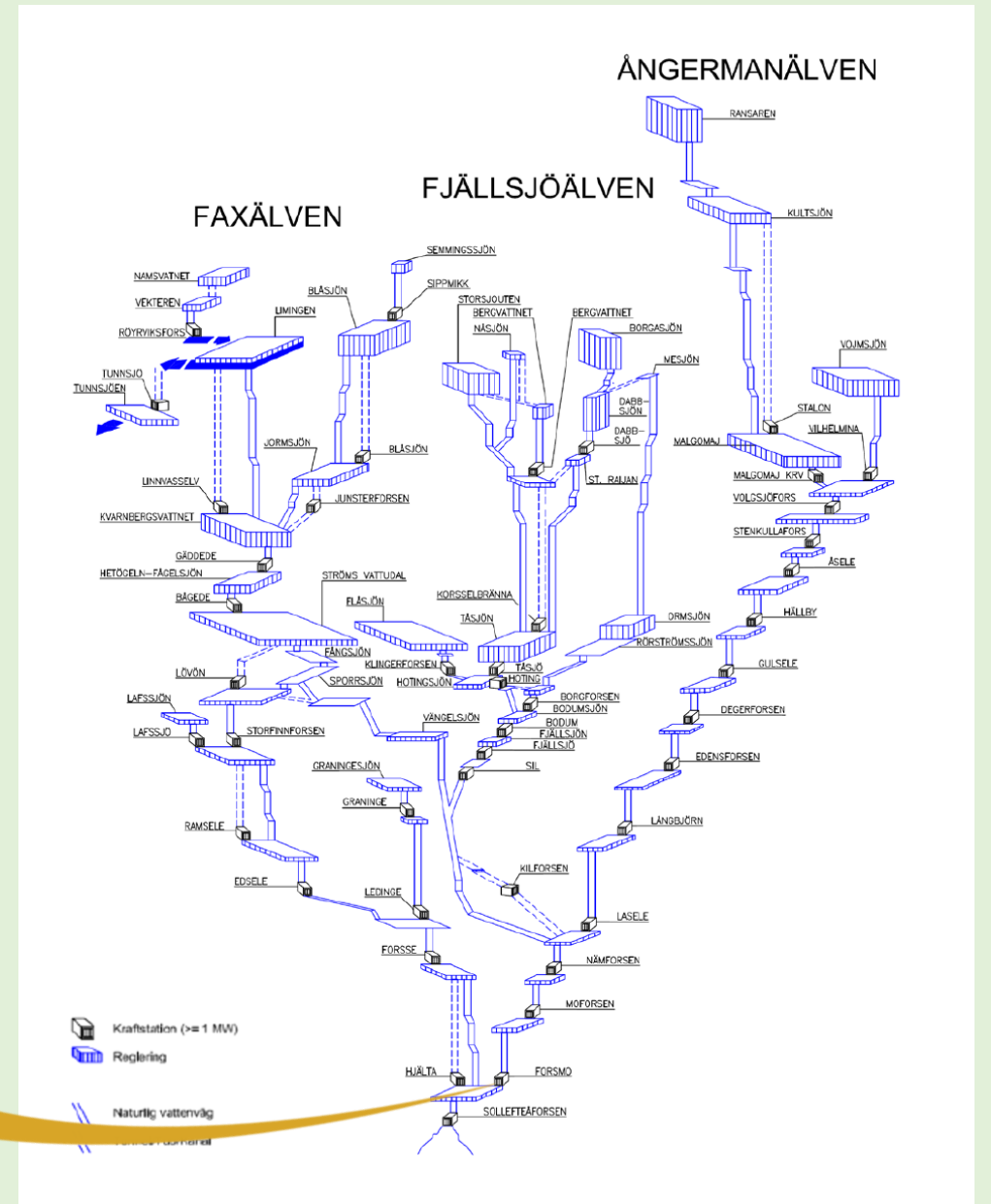
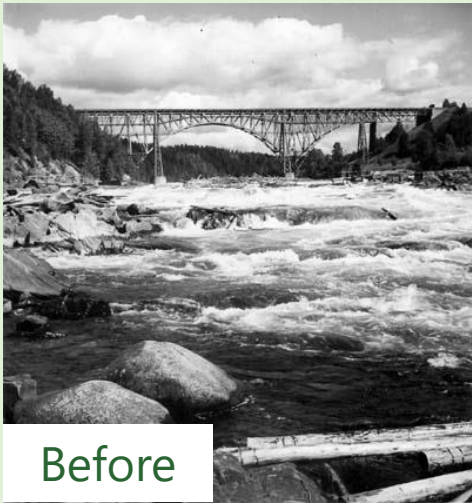
Catchment area: 31 865 km²

Main stream: 460 km

Main tributaries: Faxälven, Fjällsjöälven, Vojmån

Power plants: 38 ≥ 10 MW, 13 < 10 MW

Production: 11.5 TWh (18 % of hydropower production in Sweden)



Water Management

- **Six comprehensive reports** on proposals for environmental improvement measures at power plants and dams along the river Ångermanälven.
- **Several streams and dried out river channels restored.**
- Involvement in **planning of a large fishway** past the power plant located in central Sollefteå city.
- Numerous ideas for studies as well as practical projects
- Nationally acknowledged
- Not supported by Swedish legislation and strategies and hence not by hydropower companies.

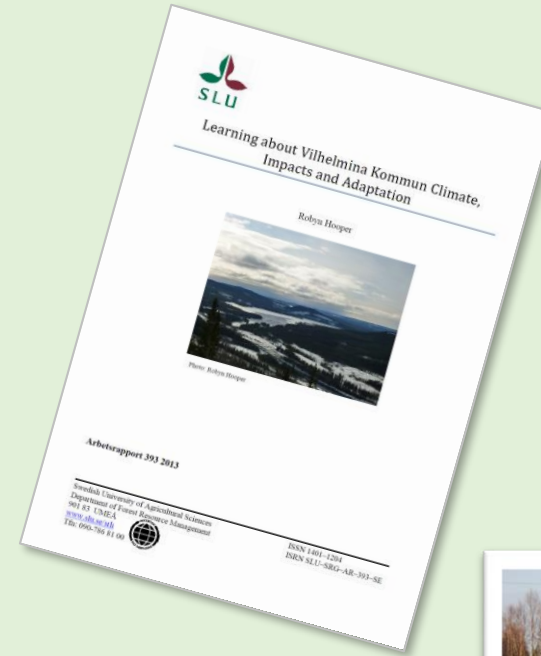
What will the new national strategy for hydropower imply for the rivers in Sweden and the efforts of VMF?



Climate Change

- **Report on climate change** in Vilhelmina municipality based on local experiences and official data.
- **Thematic gatherings**
 - Results successfully used in participatory process in municipal comprehensive planning.
 - Ambition to present local climate guide – failed due to the extensive issue and limited resources for commitment

How to incorporate dealing with the challenges of climate change in legally required planning and every day activities?

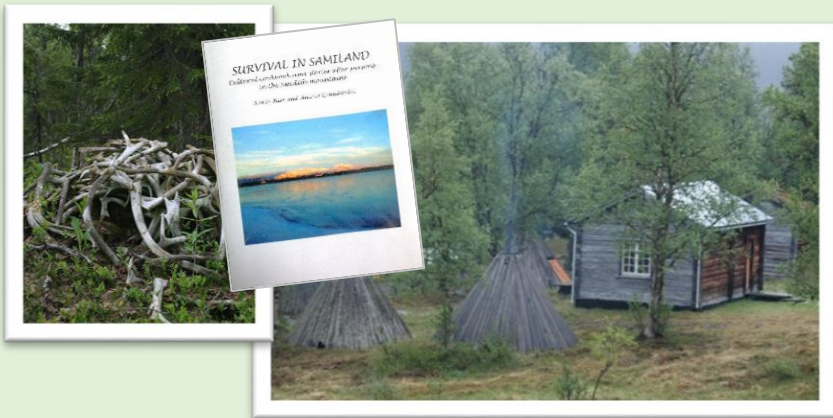


Non-Forestry Resources

Following the year of **Sámi reindeer husbandry**, with migration from mountains to the coast and back again, makes clear the impact from forestry, wind- and hydropower production, roads and railways, large predators etc.

→ **Reindeer herding plans** and **Reindeer GIS**, describing the reindeer herding land use to increase understanding and improve preconditions for consultation. Initiated in VMF and spread to almost all of the Sami reindeer herding and economic districts in Sweden.

How can VMF continue to support the tools for knowledge exchange and consultation between conflicting land uses?

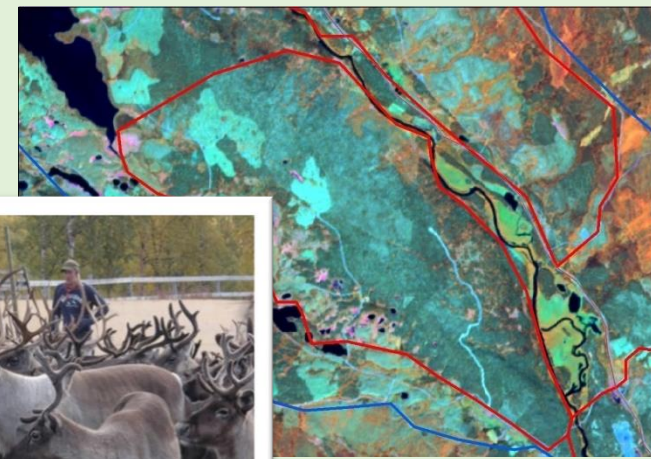


The value of **cultural landscapes**

→ VMF inspired project on **alternative methods for organizing and financing resoration and management of culturally valuable settings**

→ **Cultural cookbook** with traditional recipes

How can VMF be a platform to continue the initiated work of inventory and bringing forth cultural values throughout the landscape?



Participatory planning - the way of a Model Forest

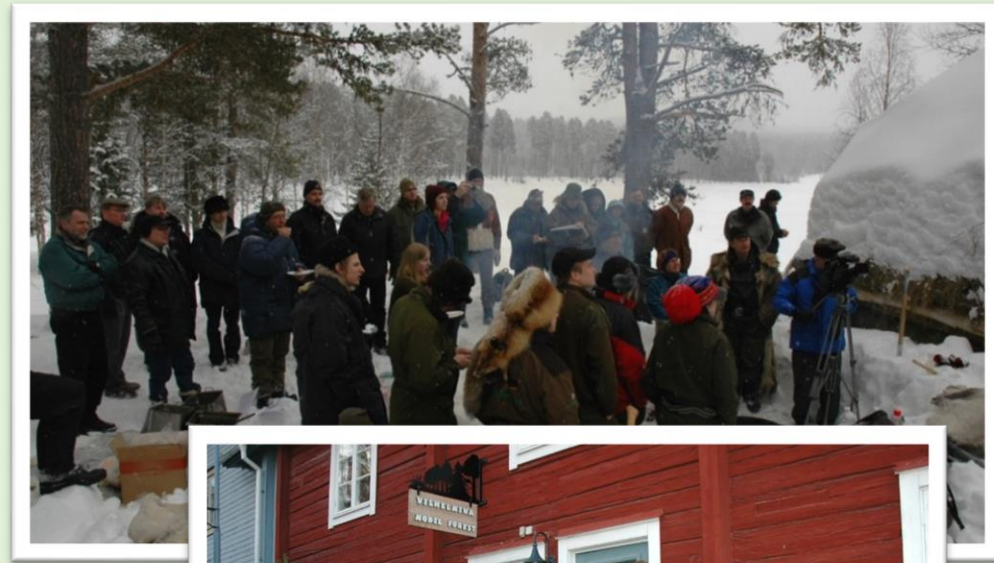
- VMF inspired project for **Municipal Comprehensive Planning** with focus on local participation and sustainable development
 - Local government, the local community and researchers working and learning together.



- **Define social values of the forest** and agree on solutions to manage forest with regards to various forest values
 - **Ambition to form a local reserve** in the village of Dalasjö – “tripped on the finish line” due to political rejection
 - **Valuable learning process** regarding participatory planning and increased awareness among participating actors; land owners, the local community, the local government and universities.

International Collaboration

- **Sharing experiences and spreading of “new” knowledge**
- Strong cooperation with the Canadian Model Forest Network, particularly Prince Albert Model Forest (PAMF)
 - **Youth exchanges**
 - **Collaborations on traditional knowledge** and learning from elders, with focus on indigenous peoples - Native Americans and the Sámi
- **Meetings and excursions** with international colleagues from other MF:s and partners in research projects



Research and Education

→ Projects and funding – vital for **bringing forth and spreading of “new” knowledge**

Renbruksplan



BALTIC LANDSCAPE

HÅLLBARA LANDSKAP



FjällMISTRA



Learning from our elders

REGIONALA LANDSKAPSSTRATEGIER

BALTIC FOREST



Framtida trender och drivkrafter i
Västerbottens inland

THE IMFN CIRCUMBOREAL INITIATIVE

PLURAL

GRÖN INFRASTRUKTUR



Demonstration areas

→ Much appreciated **classrooms of nature**

- Displaying the landscape
- Carrying out and evaluating experiments



Silisen
Reindeer herding,
historical site

Laxbäcken
Forestry along
a water course

Statsås
Burning

Kyrkberget
Information paths

LAXBÄCKEN
SKOGLIGT DEMONSTRATIONSONOMRÅDE

- skogsbruk vid vattendrag
- mjölkplatsen, samisk kulturhistoria
- en naturupplevelse från rännil till sjö

How to secure long term management of demonstration areas?

Strategy 2024-2030

- Secure financial basis for administration
- Rebuild locally based organisational structure
- Adopt relevant, strategic and measurable goals for Model Forest theme 1-6 including:
 - Initiate new activities and projects
 - Restore and develop new demonstration areas
- Long term; develop/reconstruct network for knowledge exchange (regionally, nationally and internationally)



**Thank You for Your attention
and
Welcome to Vilhelmina Model Forest!**